



12c Ashgrove Road, Ashford, TW15 1NU

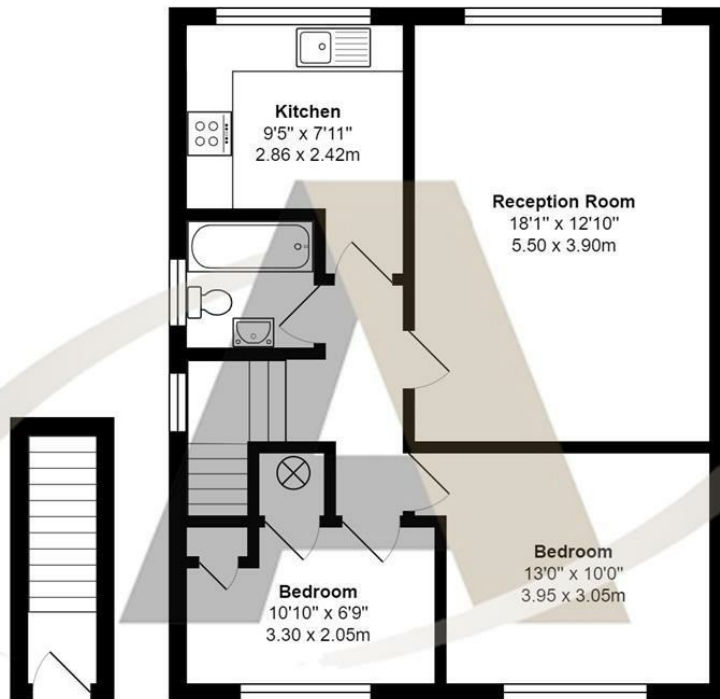
£1,600 Per Calendar Month

## 12c Ashgrove Road, Ashford, TW15 1NU

Recently refurbished by the landlord this lovely 2 bedroom 1st floor maisonette is a must-see. Situated in Ashgrove Road this property would suit a professional couple or small family. Accommodation comprises a large double bedroom, a smaller single bedroom perfect as a study or child's bedroom, a large lounge, a brand-new kitchen, and a fully tiled bathroom. Virtually everything in this apartment is brand new including carpets, kitchen appliances, heating and hot water systems. The property also benefits from its own garden which is larger than average. This property is available immediately on an unfurnished basis. Call Aspen Estate Agents to arrange your viewing.



## Floor Plan



12c, Ashgrove Road, Ashford

Total Area: 680 ft² ... 63.2 m²

All measurements are approximate and for display purposes only



### Features

- 2 Bedroom, First Floor Maisonette
- Freshly decorated with new carpets
- New Kitchen and Appliances
- Large Lounge
- Fully Tiled Bathroom
- Available Now, Unfurnished

